

ASTRUM

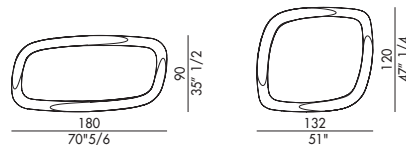
Design Andrea Lucatello



Astrum è lo **specchio da parete di design** dalla forma unica e definita, la soluzione d'arredo perfetta per valorizzare ambienti d'ingresso o di condivisione. Frutto del designer Andrea Lucatello, deve il nome agli astri dello spazio, dai quali trae ispirazione. Lo **specchio Astrum** fa parte di una collezione di specchi dalla cornice di vetro, che viene forgiata mediante il calore. Caratteristica peculiare di questo elemento d'arredo è la particolare lavorazione che consente di plasmare la lastra di vetro, dando origine a due elementi in rilievo, che paiono rincorrersi descrivendo la stessa orbita, come astri nella galassia. Lo specchio Astrum trova una collocazione vincente abbinato a mobili di pregio come la [Console Plai](#) con top in marmo e la [lampada da tavolo Vida](#). Perfetto anche per essere collocato sopra ad una madia sobria ed elegante come la [Madia Syra](#).

Astrum is the design wall mirror with a unique and defined shape, the perfect furnishing solution to enhance entrance or sharing environments. The brainchild of designer Andrea Lucatello, it owes its name to the stars of space, from which it draws inspiration. The Astrum mirror is part of a collection of mirrors with a glass frame, which is forged using heat. A peculiar characteristic of this furnishing element is the particular workmanship that allows the glass sheet to be shaped, giving rise to two elements in relief, which seem to chase each other describing the same orbit, like stars in the galaxy. The Astrum mirror finds a winning position combined with fine furniture such as the [Console Plai with marble top and the Vida table lamp](#). Also perfect for placing on top of a sober and elegant sideboard like the [Syra sideboard](#).

Informazioni tecniche / Technical informations



Specchio da parete in cristallo curvato specchiato fumè o specchiato bronzo, supporto a parete con possibilità di fissaggio orizzontale e verticale.

Cristallo specchiato fumè CR3

Cristallo specchiato bronzo CR4

Wall mirror smoked or bronze mirrored curved glass, wall support for both horizontal and vertical position.

Fumè mirrored glass CR3

Bronze mirrored glass CR4

FINITURE/FINISHES

Attenzione: il prodotto finito può presentare delle lievi variazioni di colore rispetto ai campioni forniti dall'azienda. I colori visualizzati sono puramente indicativi e possono variare rispetto alla realtà. Rivolgersi ad EFORMA o al proprio rivenditore di fiducia per ricevere maggiori informazioni. EFORMA si riserva di apportare modifiche e/o migliorie di carattere tecnico ed estetico ai propri modelli e prodotti in qualsiasi momento e senza preavviso. / Attention: the final product may show slight variations in colour compared to the samples supplied by the company. The colours displayed are indicative and can vary in reality. Please contact EFORMA or your preferred retailer for more information. EFORMA reserves the right to change and/or apply technical and esthetical improvements to its models and products at any time without any notice.

Metallo/Metal

I metalli della nostra collezione vengono verniciati a polvere così da rivestire le nostre superfici a scopo decorativo e protettivo. Lo spessore finale della verniciatura a polveri, risulta particolarmente elevata contribuendo ad una serie di rilevanti vantaggi sul prodotto verniciato: resistenza meccanica, resistenza agli agenti corrosivi, scarsa infiammabilità, precisione nell'applicazione. Le verniciature a polveri utilizzate sono totalmente atossiche e prive di solventi, per questo motivo la verniciatura a polveri è una lavorazione ECO-FRIENDLY, a bassissimo impatto ambientale. Disponibile la versione cromata dove il metallo o l'alluminio vengono rivestiti di cromo, conferendogli così durezza, resistenza chimica e resistenza all'ossidazione. / The metals in our collection are powder coated in order to coat our surfaces for decorative and protective purposes. The final thickness of the powder coating is particularly high contributing to a series of advantages for the painted product: mechanical resistance, resistance to corrosive agents, low flammability, precision in the application. The powder coatings used are non-toxic and solvent-free, for this reason powder coating is an ECO-FRIENDLY process, with a very low environmental impact. The chrome version is available where the metal or aluminum is coated with chrome, giving it hardness, chemical resistance and resistance to oxidation.



V01 - Nero/Black



V03 - Antracite/Anthracite



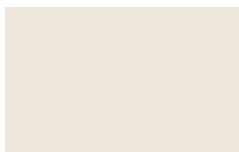
V04 - Titanio/Titanium



V05 - Bronzo/Bronze



V06 - Oro/Gold



V08 - Avorio / Ivory



CRO - Cromo/Chrome



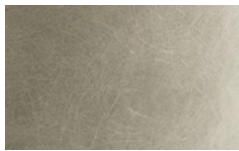
CRN - Cromo Nero/
Black Chrome



ASP - Alluminio Spazzolato/
Polished Aluminium



VS6 - Oro spazzolato/
Brushed Gold



S01 - Platino spazzolato/
Brushed Platinum



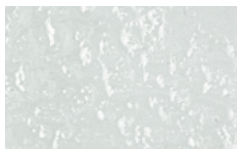
S02 - Bronzo spazzolato vintage /
Brushed Bronze vintage

Cristallo/Glass

I cristalli utilizzati da EFORMA vengono temprati come richiedono e prescrivono le norme antinfortunistiche. Le lastre di vetro colorato, soprattutto nelle superfici più ampie, possono presentare dei piccoli puntini che sono dovuti alle caratteristiche di lavorazione, ai processi di verniciatura ad alte temperature ed a reazioni naturali del cristallo. Tali irregolarità non possono in alcun modo essere considerati difetti ma naturali variazioni in un processo di lavorazione molto sofisticato e delicato. / The glasses used by EFORMA are tempered as required and prescribed by accident prevention regulations. The sheets of colored glass, especially in larger surfaces, may have small dots that are due to the characteristics of its processing, of the painting process at high temperature and the natural reactions of the crystal. These irregularities can in no way be considered defects but natural variations in a very sophisticated and delicate process.



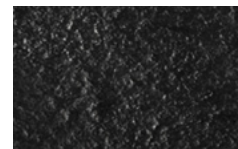
CR0 - Cristallo extrachiaro
trasparente / Extra clear
transparent glass



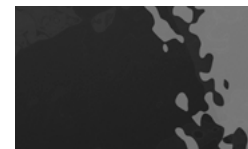
RI3 - Cristallo martellato
trasparente / Transparent
hammered glass



CR1 - Cristallo verniciato
Nero lucido / Glossy
Black painted glass



RI1 - Cristallo martellato
Nero lucido / Glossy
Black hammered glass



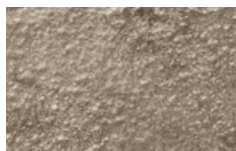
FU1 - Cristallo Fuso
verniciato Nero lucido / Glossy
Black painted fused glass **NEW**



FU6 - Cristallo Fuso Fumè
trasparente / Glossy Fumè
fused transparent glass **NEW**



CR2 - Cristallo verniciato
Tortora lucido / Glossy
Tortora painted glass



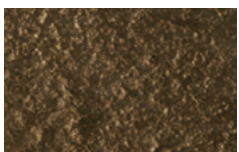
RI2 - Cristallo martellato
Tortora lucido / Glossy
Tortora hammered glass



FU2 - Cristallo Fuso
verniciato Tortora lucido
Glossy Tortora painted
fused glass **NEW**



FU7 - Cristallo Fuso Avorio
trasparente / Glossy Ivory
fused transparent glass **NEW**



RI5 - Cristallo martellato
Bronzo lucido / Glossy
Bronze hammered glass



FU5 - Cristallo Fuso
verniciato Bronzo lucido
/ Glossy Bronze painted
fused glass **NEW**

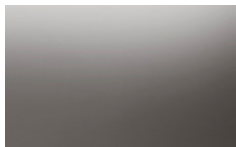


FU8 - Cristallo Fuso Bronzo
trasparente / Glossy Bronze
fused transparent glass **NEW**

Specchio/Mirror



CR5 - Cristallo specchiato/
Mirrored glass



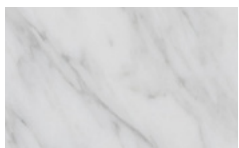
CR3 - Cristallo specchiato
Fumè/ Fumè mirrored
glass



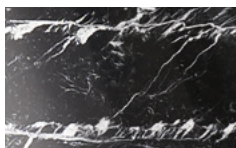
CR4 - Cristallo specchiato
Bronzo/ Bronze mirrored
glass

Marmo/Marble

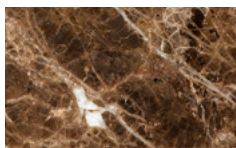
Il marmo naturale che viene utilizzato per le nostre collezioni, deriva da lastre accuratamente selezionate e lavorate facendo così esaltare i suoi colori e i suoi cristalli. Ogni materiale naturale va visto come pezzo unico e le diverse lastre possono presentare variazioni di colore e struttura. / The natural marble that is used for our collections, comes from carefully selected and processed slabs, thus enhancing its colors and crystals. Each natural material should be seen as a unique piece and the different slabs may present variations in color and structure.



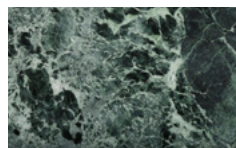
M01 - Carrara lucido /
Glossy Carrara



M02 - Nero Marquinia luc. /
Glossy Nero Marquinia



M03 - Emperador lucido /
Glossy Emperador



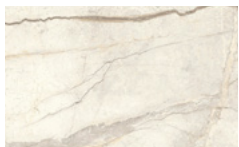
M04 - Verde Alpi lucido /
Glossy Verde Alpi



M05 - Travertino opaco /
Matt Travertino

Ceramica/Ceramic

La ceramica è realizzata in gres porcellanato accoppiato a un piano in vetro. I piani sono ottenuti con tecniche innovative che li rendono estremamente resistenti ai graffi, all'usura ed alle alte temperature. Molto facile da pulire. / Ceramic is made of porcelain stoneware coupled with a glass top. The tops are obtained with innovative techniques that make them extremely resistant to scratches, wear and high temperatures, very easy to clean.



CM14 - Silver Root
bianco opaco / Matt Silver
Root bianco **NEW**



CM2 - Statuario lucido /
Glossy Statuario



CM1 - Calacatta Gold luc. /
Glossy Calacatta Gold



CM7 - Calacatta Gold opaco /
Matt Calacatta Gold



CM12 - Calacatta Macchia
vecchia lucido / Glossy
Calacatta Macchia vecchia



CM10 - Patagonia lucido /
Glossy Patagonia



CM11 - Travertino opaco /
Matt Travertino



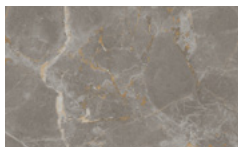
CM5 - Onice lucido /
Glossy Onice



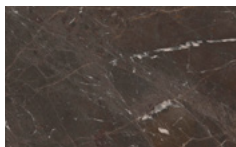
CM4 - Alabastro lucido /
Glossy Alabastro



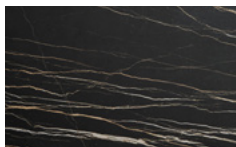
CM13 - Silver Root opaco /
Matt Silver Root



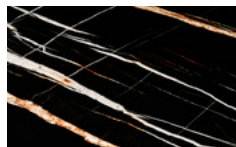
CM15 - Fior di Bosco
opaco / Matt Fior di
Bosco **NEW**



CM16 - Breccia Imperiale
opaco / Matt Breccia
Imperiale **NEW**



CM3 - Portoro opaco /
Matt Portoro



CM6 - Sahara Noir lucido /
Glossy Sahara Noir

Legno/Wood

Il legno che viene utilizzato è tra i migliori che esistono sul mercato europeo. Viene lavorato con le migliori tecniche garantendo così resistenza e durata.
The wood which is used is one of the best available in European markets. It is worked with the best techniques guaranteeing resistance and durability.

LEGNO IMPIALLACCIATO/VENEERED WOOD

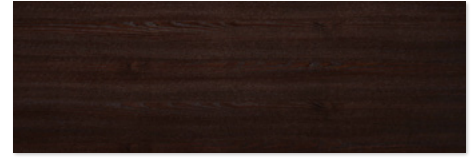
I piani impiallacciati nelle varie essenze, sono accuratamente selezionati e aggiuntati utilizzando fogli rigati e fiammati. Piccole variazioni di colore testimoniano l'autenticità di ogni singola pianta. Sulla superficie vengono applicate vernici opache trasparenti. / *The veneered tops in their various essences, are carefully selected and added by using striped and flamed sheets. Small variations of color testify to the authenticity of each plant. Transparent opaque varnishes are applied to the surface.*



NC - Noce Canaletto / *Canaletto Walnut*



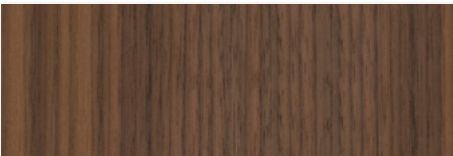
FNR - Frassino tinto Nero / *Black stained Ash*



FTM - Frassino tinto Testa di Moro / *Dark Brown stained Ash*

LEGNO MASSELLO/SOLID WOOD

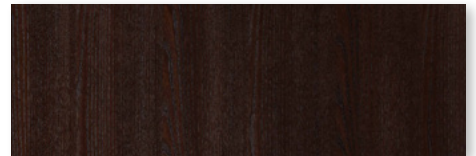
Il legno utilizzato è un materiale di pregio che si caratterizza principalmente per la resistenza all'usura e per l'estetica. Durante il suo ciclo di crescita, sviluppo e maturazione, il legno si evolve nelle sue qualità come il cambio nel colore, nei nodi, e nelle vene. Essendo un materiale vivo, e naturale, può presentare delle variazioni di vene e di tonalità.
The wood used is a valuable material that is mainly characterized by its wear resistance and its aesthetics. During its cycle of growth, development and maturation, the wood's qualities. Evolve showing a change in color, in the knots, and in the veins. Being a living, natural material, it can present variations in veins and shades.



FVC - Frassino tinto Noce Canaletto / *Canaletto Walnut stained Ash*



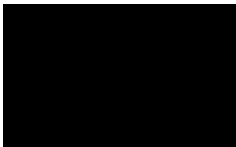
FNR - Frassino tinto Nero / *Black stained Ash*



FTM - Frassino tinto Testa di Moro / *Dark Brown stained Ash*

Laccato/Lacquered

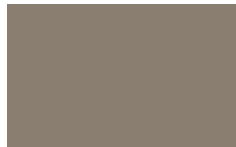
I laccati sono composti da un pannello in MDF (medium Density Fibre Board) verniciato su entrambi i lati. / *Lacquered products are made of a MDF (medium Density Fibre Board) painted panel on both sides.*



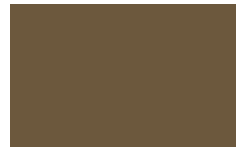
L01 - Nero opaco / *Matt Black*



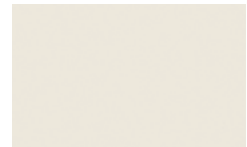
L03 - Antracite opaco / *Matt Anthracite*



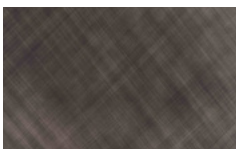
L04 - Titanio opaco / *Matt Titanium*



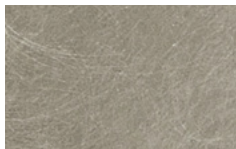
L05 - Bronzo opaco / *Matt Bronze*



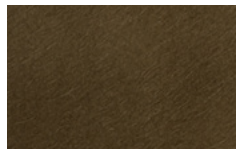
L08 - Avorio / *Ivory*



L07 - Bronzo spazzolato / *Brushed Bronze*



B01 - Platino spazzolato / *Brushed Platinum*



B02 - Bronzo spazzolato vintage / *Brushed Bronze vintage*



L20 - Ciliegia lucido / *Glossy Ciliegia* **NEW**



L21 - Mattone lucido / *Glossy Mattone* **NEW**



L23 - Foresta lucido / *Glossy Foresta* **NEW**



L22 - Ottanio lucido / *Glossy Ottanio* **NEW**



L25 - Sabbia lucido / *Glossy Sabbia* **NEW**

Finiture imbottiture / Upholstery Finishes

Rivestimento in Ecopelle Premium / Covering in Eco-leather Premium

NEW



P01



P02



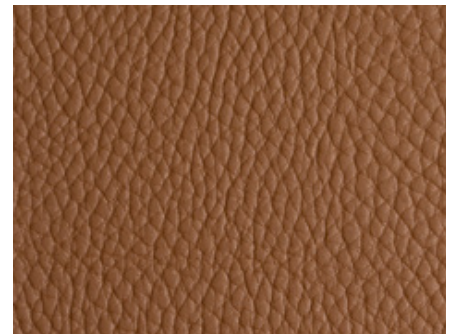
P03



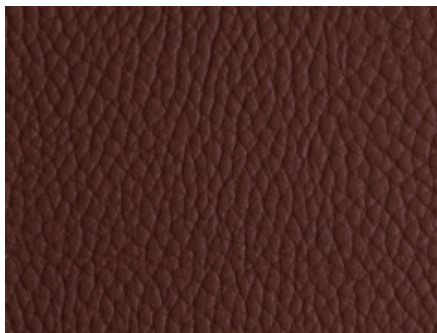
P04



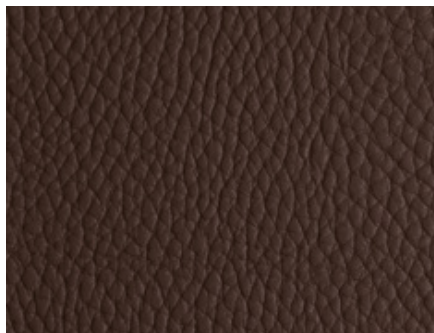
P05



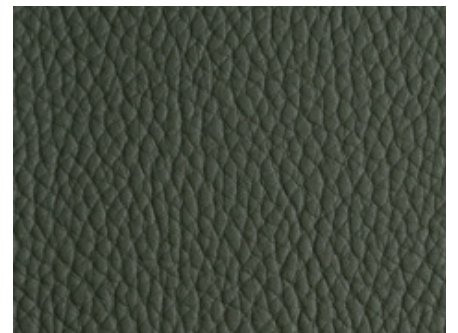
P06



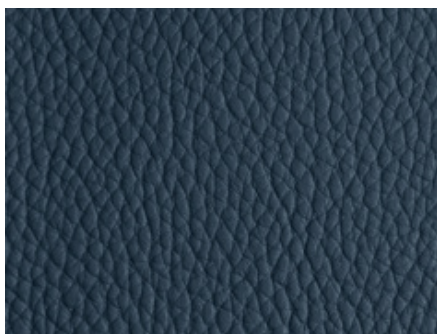
P07



P08



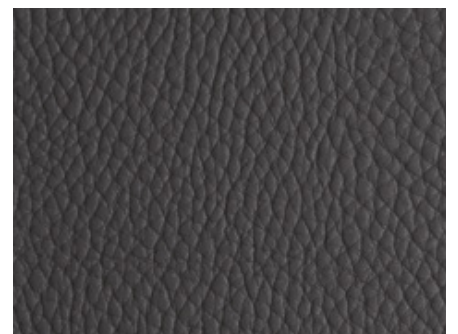
P09



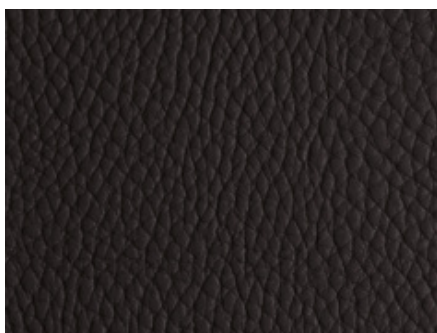
P10



P11



P12



P13

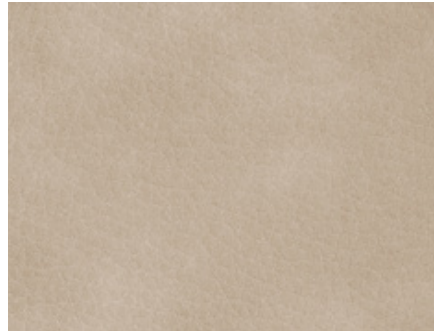
Finiture imbottiture / Upholstery Finishes

Rivestimento in econabuk / Covering in eco-nabuk

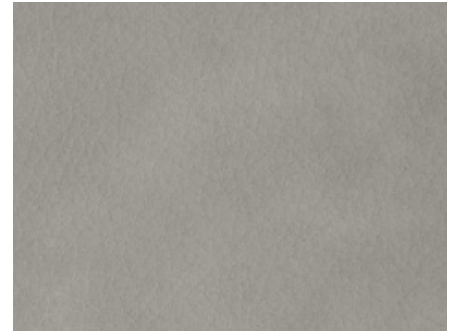
NEW



C01



C02



C03



C04



C05



C06



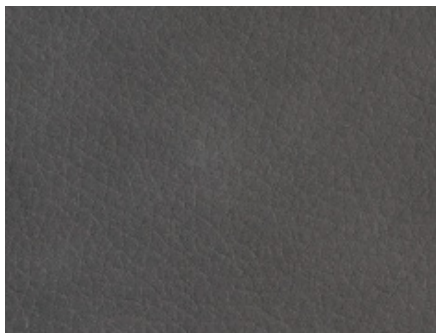
C07



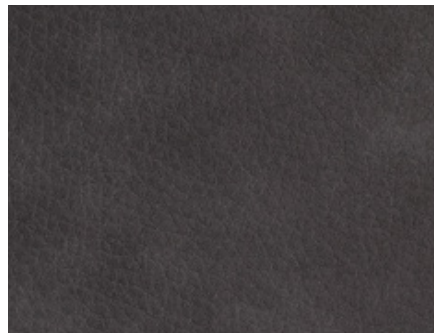
C08



C09



C10



C11

Rivestimento in pelle / Covering in leather



5000 BIANCO



5518 LATTE



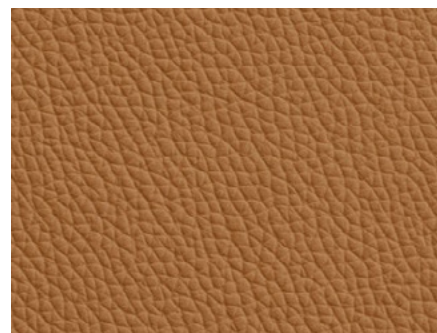
5508 AVORIO



5522 TORTORA



5504 FANGO



5070 NOCCIOLA



5402 GRIGIO CHIARO



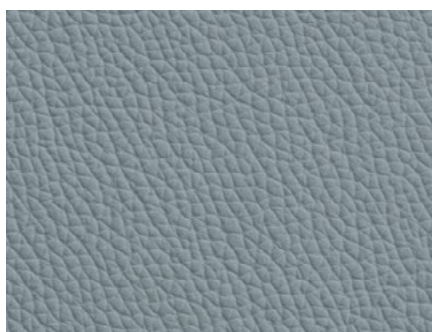
2256 GHIACCIO



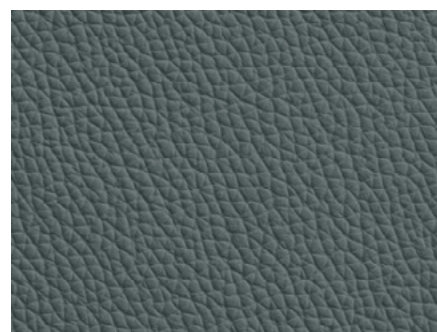
5280 CENERE



5420 GRIGIO



5416 AVIO



5428 OTTANIO



4548 BEIGE CHIARO



4036 CRETA SCURO



4170 TALPA

Rivestimento in pelle / Covering in leather



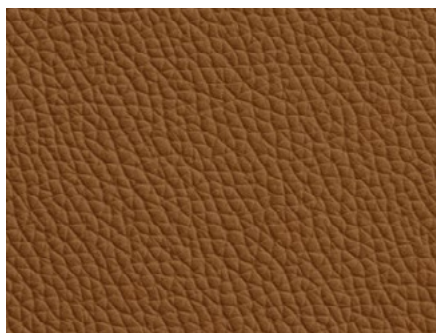
5480 PANNA



5528 BEIGE



5320 BEIGE SCURO



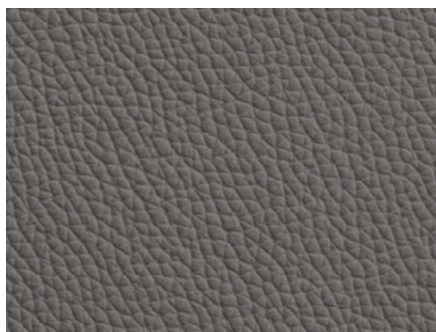
5110 TABACCO



5090 MARRONE CHIARO



5400 MARRONE SCURO



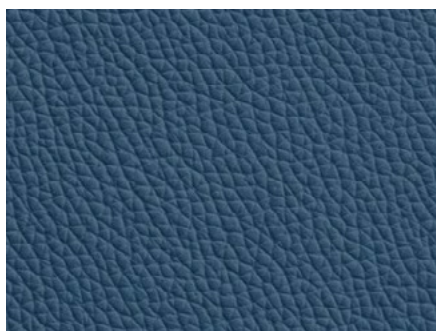
5290 GRIGIO MEDIO



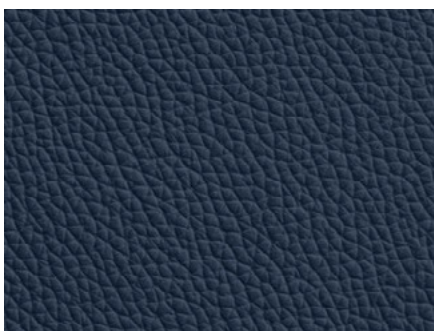
5310 ANTRACITE



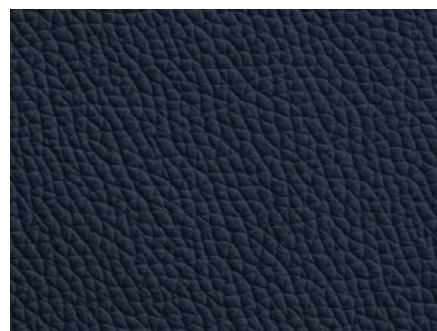
5200 ROSSO



9031 BLU



9021 OCEANO



5431 BLU NOTTE

Rivestimento in pelle / Covering in leather



9034 CRETA



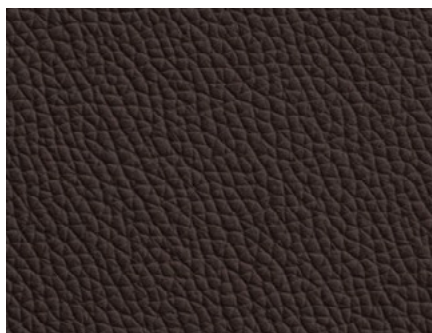
5502 AVANA



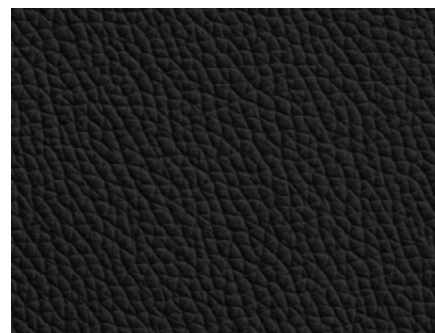
5414 MARRONE



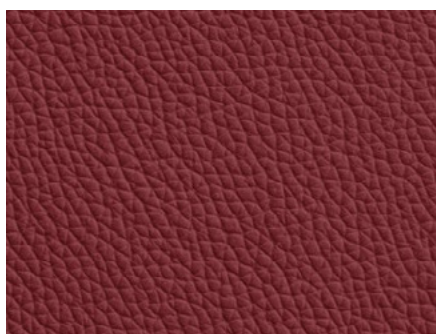
9030 CIOCCOLATO



5270 TESTA DI MORO



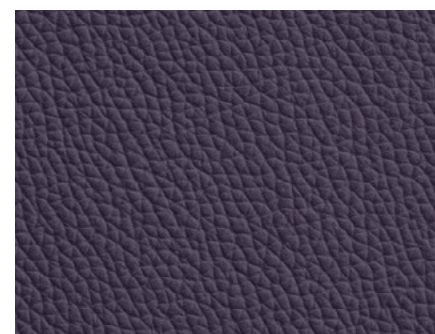
5300 NERO



5210 BORDEAUX



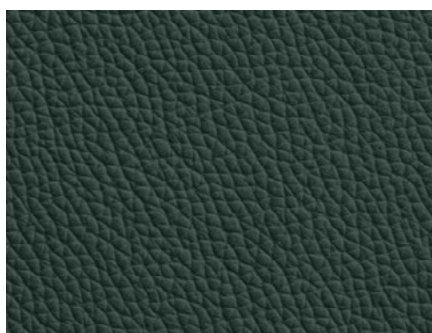
5460 MORA



5406 VINACCIA



5120 VERDE SALVIA

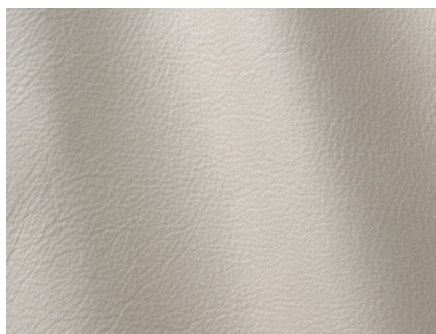


5150 VERDE BOSCO

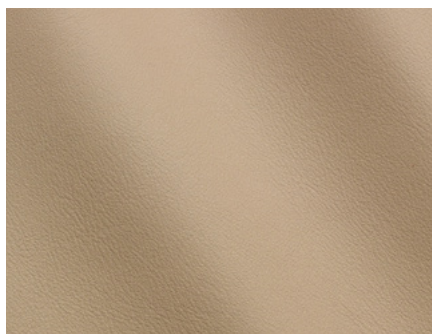


9045 MUSCHIO

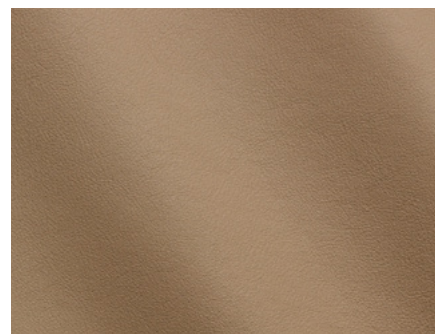
Rivestimento in pelle Elite / Covering in Elite leather



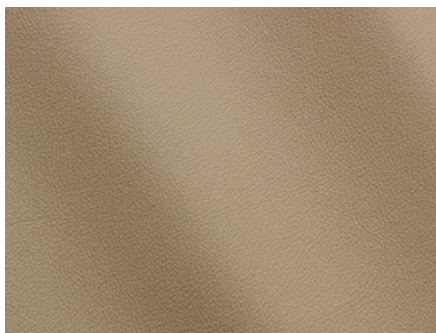
E02 GESSO



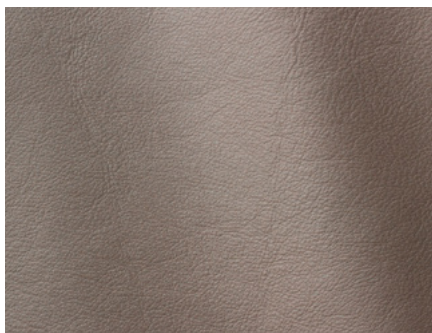
E04 ARGILLA



E06 PIETRA



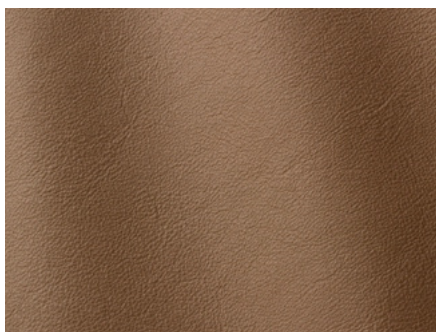
E14 TERRA



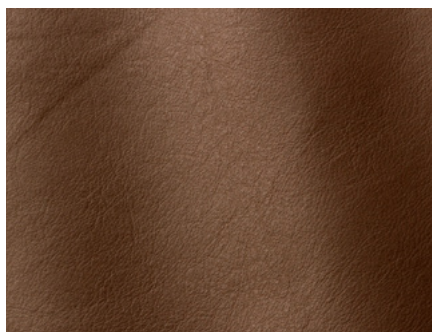
E16 ASFALTO



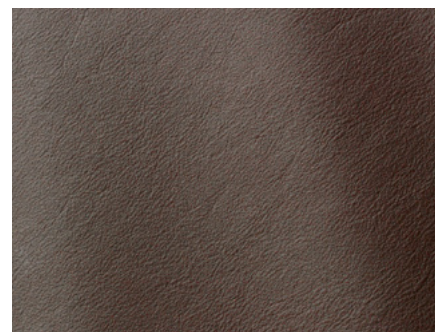
E18 SMOKE



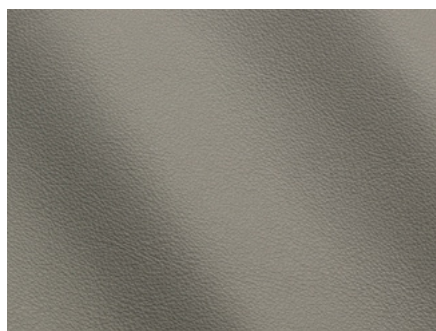
E26 MUD



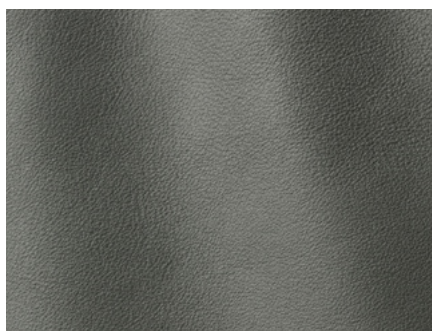
E28 CAFFÈ



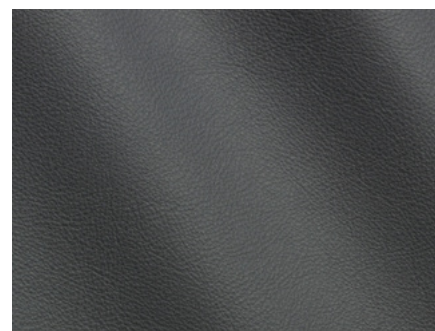
E30 CACAO



E38 CENERE SCURO

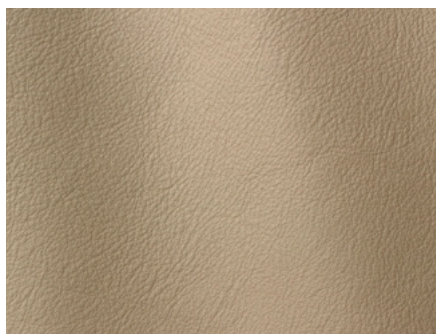


E40 ARDESIA

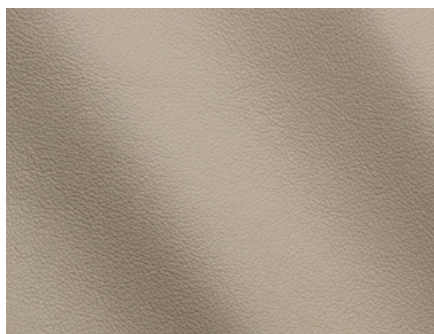


E42 ELEFANTE

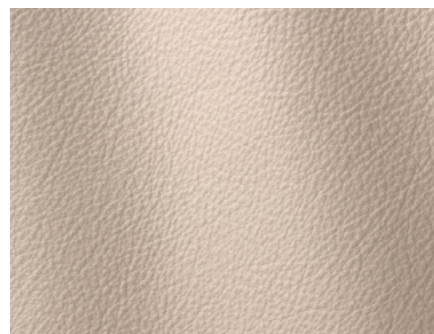
Rivestimento in pelle Elite / Covering in Elite leather



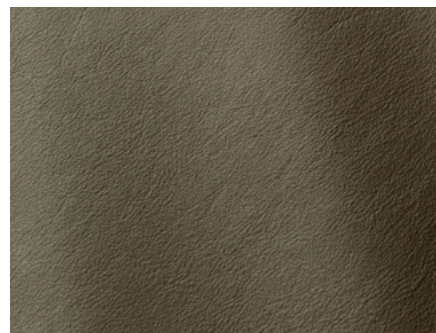
E08 TOPO



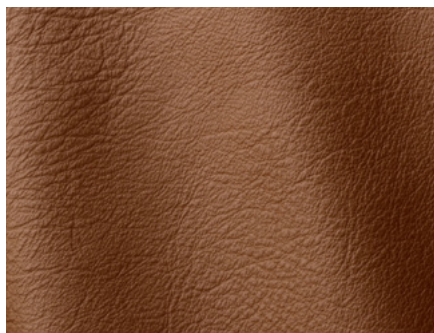
E10 CORDA



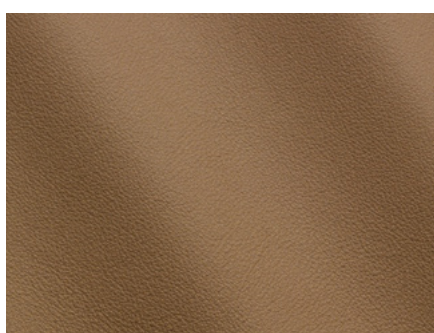
E12 GRIGIO PERLA



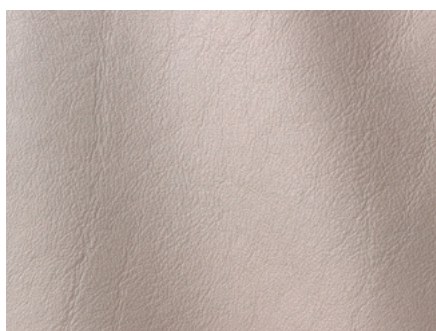
E20 VERDONE



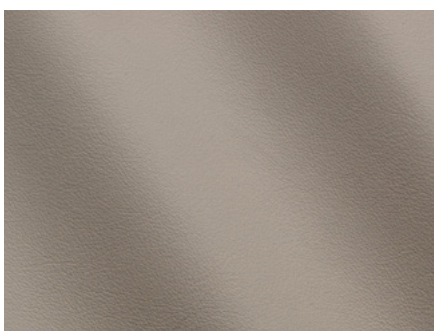
E22 SIENA



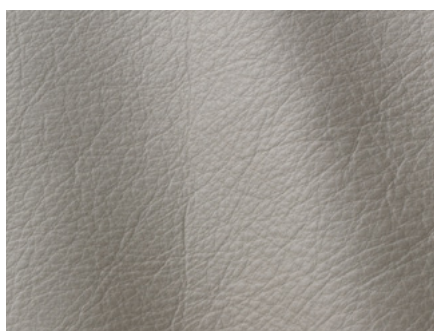
E24 MALTO



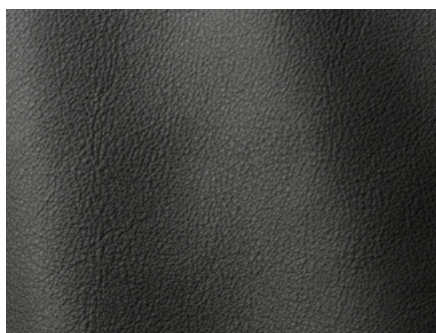
E32 CINDER



E34 FROZEN



E36 ACCIAIO



E44 BLACK